

THREADED WATER METERS

Serie TC1 Single-jet water meters with pulse sender, dry dial and roller reading.
Suitable for cold water up to 30° C.

	Standard models 4 or 1 pulse/l		4 pulse/ Code	1 pulse/ Code	
	inches	mm			
MEASURES	½"	13	WMT013C1D0	WMT013C1A0	
	¾"	20	WMT020C1D0	WMT020C1A0	
	1"	25	WMT025C1D0	WMT025C1A0	
	1"¼	30	WMT030C1D0	WMT030C1A0	
	1"½	40	WMT040C1D0	WMT040C1A0	
	2"	50	WMT050C1D0	WMT050C1A0	

Serie TH1 Single-jet water meters with pulse sender, dry dial and roller reading.
Suitable for hot water up to 90° C.

	Standard models 4 or 1 pulse/l		4 pulse/ Code	1 pulse/ Code	
	inches	mm			
MEASURES	½"	13	WMT013H1D0	WMT013H1A0	
	¾"	20	WMT020H1D0	WMT020H1A0	
	1"	25	WMT025H1D0	WMT025H1A0	
	1"¼	30	WMT030H1D0	WMT030H1A0	
	1"½	40	WMT040H1D0	WMT040H1A0	
	2"	50	WMT050H1D0	WMT050H1A0	

Serie TC0 Single-jet water meters, without pulse sender, roller reading.
Suitable for cold water up to 30° C

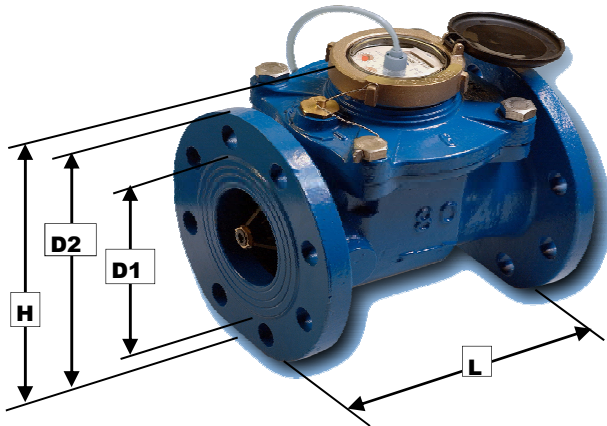
	Standard models		DRY dial	Price list EURO	WET dial	
	inches	mm				
MEASURES	½"	13	WMT013C000	42,00	WMT013C00W	
	¾"	20	WMT020C000	52,00	WMT020C00W	
	1"	25	WMT025C000	76,00	WMT025C00W	
	1"¼	30	WMT030C000	83,00	WMT030C00W	
	1"½	40	WMT040C000	194,00	WMT040C00W	
	2"	50	WMT050C000	334,00	WMT050C00W	

Spare parts for TC0 Series

	Size			
	inches	mm		
Turbines	½" - ¾"	13-20	ASK TO FACTORY FOR CODES AND PRICES	
	1" - 1"¼	25-30		
	1"½	30-40		
	2"	55		
Clock	½"	13	ASK TO FACTORY FOR CODES AND PRICES	
	¾"	20		
	1" - 1"¼	25-30		
	1"½	40		
	2"	55		

FLANGED WATER-METER

Dimensional data



Size	DN	50	65	80	100	150
	inches	2"	2" ½	3"	4"	6"
L (mm)		200	200	200	250	300
D2 (mm)		125	145	160	180	240
D1 (mm)		165	185	200	220	285
H (mm)		247	258	265	272	302

FC Series Water-meter Woltmann series with dry dial reading and pulse sender.
Suitable for cold water up to 30°C

	Standard models			FC 100	
	pollici	mm			
MEASURE	2"	DN 50		WMF050C1I0	
	2"1/2	DN 65		WMF065C1I0	
	3"	DN 80		WMF080C1I0	
	4"	DN 100		WMF100C1I0	
				FC 1000	
	6"	DN 150		WMF150C1L0	